



The Newsletter



of the

Orwell Astronomical Society (Ipswich)

2012
OCTOBER

Registered charity no. 271313

www.oasi.org.uk

No 478



July go's out in a blaze of glory

Taken on Monday 30th July

LECTURE MEETING Friday 12th October 8.00pm
"Barnard, Gordon and the darkness" By Nick Hewitt
At Methodist Church Hall Blackhorse Lane.

Society News (Roy Gooding)

1 Committee Meeting

2 Access into the School Grounds and Observatory Tower

The code for the car park gate, is on the back of your membership card.

Please use the third gate into the school grounds, this is the gate behind the Gym. If the Black door entrance at the base of the observatory tower is locked, you will have to phone someone in the observatory to let you in. My mobile number is [REDACTED] (Roy Gooding) alternatively the Observatory mobile is [REDACTED] during meeting hours.

3 Welcome to New Members

Mr& Mrs Hickey

4 Events Programme for 2012

This provisional event list will be updated through out the year

Event	Venue	Date
Lecture meeting Nick Hewitt "Barnard, Gordon and the Darkness". It's about Dark Nebulae.	Methodist Church Halls, Blackhorse Lane	12 th October
FAS convention	Cambridge Institute Astronomy	Saturday 6 th October
Open Weekend	Orwell Park Observatory	27 th & 28 th October
Christmas Meal	Lodge at Whearstead	5 th December 19:45

5 Other Observational Events 2012

Meeting	Venue	Date
Geminids provisional meeting	Behind the refreshment hut at "The Dip" Felixstowe	15 th December

6 Observational Out Reach Meetings 2012

Autumn Star Party: Chantry Park Saturday 22nd September

At the time of writing this event is **ON**. About 30 people have booked infor this event so far.

Please note the times below

Meeting	Venue	Date
Star Party	Chantry Park	Saturday 22 nd September 20:00 to 22:00

Directions:

- **Please arrive at about 19:30 to set up equipment**
- **Enter Chantry Park from the Hadleigh Road entrance. It is the drive way to the Sue Rider home.**
- **This drive does not have any gates so access is always open**
- **At the top of the drive take the left hand road. There are about 3 speed humps along here.**

At the end of this road, which is about 200 yards long, there is a parking area.

7 OASI Email Distribution List

The society runs an email distribution list, for verious commuications between members. If you would like to be included on to this list, please sent an email to Pete Richards

Sent your email address to [REDACTED]

8 October's Lecture

The ground floor of the Methodist church will be in use all day, and ourusual meetign room may not be free. The lecute will take place in the upstairs hall. Parking may be more difficult

Night Sky (August)

Moon

3 rd Quarter	New Moon	1 st Quarter	Full Moon
8 th	15 th	22 nd	29 th

Object	Date			Mag	Notes
		Rise	Set		
Sun	1	05:57	17:32		
	31	06:49	16:28		
Mercury	1	07:27	17:54	0.1	Mercury will be at greatest eastern elongation on the 26 th . However during this apparition mercury is poorly placed
	31	09:21	17:00		
Venus	1	02:03	16:23	-4.2	Venus is well placed in the early sky this month
	31	03:25	15:34		
Mars	1	10:34	18:59		Mars is too close to the sun, in the sky to be seen this month
	31	10:34	18:06		
Jupiter	1	20:04	12:23	-1.9	Jupiter is coming better placed this month to observe
	31	18:02	10:19		
Saturn	1	07:51	18:21		Saturn is too close to the sun, in the sky to be seen this month
	31	06:13	16:30		
Uranus	1	17:24	05:52	5.8	Uranus is near to the borders of Pisces and Cetus
	31	15:24	03:48		
Neptune	1	16:23	02:29	7.8	Neptune is in Aquarius
	31	14:24	00:28		

Meteor Showers

Shower	Maximum	Limits	ZHR
Piscids	Sept. 8 th	Sept. to Oct.	10
	Sept. 21 st		5
	Oct. 13 th		?
Draconids (Giacobinids)	Oct 8 th 19 h	Oct 6 th to 10	200-600?
Orionids	Oct. 20 th to 22 nd	Oct. 16 th to 30 th	25

Meteor source is the BAA Handbook



OPEN WEEKEND 2012

This event has now been confirmed with the School and will be held on Saturday 27th and Sunday 28th October

Doors open for the public at 19:30

Set up time from 18:30

As usual as much help as possible is required to make this another successful Open Weekend.

If you are only available to help for a short time your presence will still be appreciated.

Posters can be obtained from either Eric Sims or Roy Gooding

PUBLIC OPEN WEEKEND

Orwell Park Observatory will be Open to the Public on

Saturday 27th October 7:30pm to 10:00pm

Sunday 28th October 7:30pm to 10:00pm

The weekends observing programme will include:

Observations of the Moon and the Night Sky

**Observations will be made using the 10" Tomline Refractor
and a wide selection of other smaller telescopes**

Christmas Meal 5th December at 19:45

After a discussing over serveral Wednesday meetings, we will be returning to the Lodge at Wherstead

Starters

Butter squash & apple soup

Grilled sardines, dill creme fraiche, dark granary bread

Ham hock terrine with cumbriand jelly toasted ciabatta

Mango & brie filo parced

Main Course

Turkey with all the trimmings

Crayfish & sole florentine gratin, dressed salad, buttered new potatoes

Aromatic apricot stuffed tenderloin, seasonal greens, sweet potato dumplings

Stuffed flatcap mushroom provencal topped with goats cheese, pan fried greens, buttered new potatoes

Pan-seared Gressingham duck, orange port & cranberry reduction, braised red cabbage, baby roasted new potatoes

Dessert

Christmass pudding, chocolate orang ice cream .orang cognac drizzle

Daily selection of sweets

Mixed cheese & biscuits, seasonal chutney

Minced pies, tea or coffee with mints

Total cost £27.50

Deposit £5.00

Please see me (Roy Gooding) to book. First come first served!

The price is only a pound more than last year

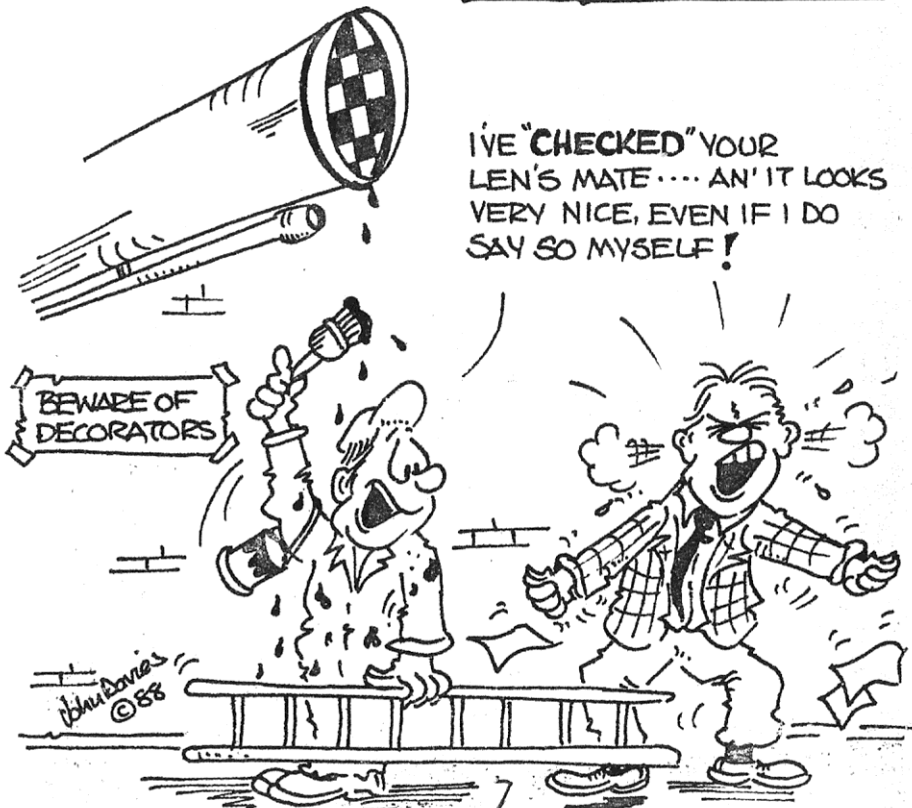
This was the last time that
I can find a complete CHECK on the lens.

ORWELL ASTRONOMICAL SOCIETY IPSWICH.



FEBRUARY 1988

I'VE "CHECKED" YOUR
LEN'S MATE.... AN' IT LOOKS
VERY NICE, EVEN IF I DO
SAY SO MYSELF!



Astronomy Workshops

Doors open at 7:30pm.

Workshops START at 7:45pm

Venue: NACTON VILLAGE HALL IP10 0EU

If you are a new OASI member, or haven't been to one of these workshops before – they are a mixture of events of different characters including beginners talks, interactive workshops, hands-on observing sessions, films etc., suitable for all. They are also a chance to chat with other members over a cup of tea and a biscuit, in a venue rather warmer than the observatory dome on a winter's night!

Date	Event	Run by...
10th October	Aurora Perhaps the greatest show not on Earth, the Northern Dawn or Aurora Borealis has been a mystery for observers for many thousands of years. We now have a better idea of what causes this spectacular display. Paul will trace the story from a hydrogen atom misbehaving in the middle of the Sun to the multi-coloured 'son (!?) et lumiere' we see in the sky	Paul Whiting
7th November	Special Relativity We have had previous workshops on measuring the speed of light. One of the most important theories emerging from the fact that light speed appears to be a universal constant is Einstein's Special Relativity. The workshop will explore the historical perspective and thinking that led to the theory. This inevitably includes some mathematics – of O-level (GCSE) standard – to explain phenomena such as Lorentz contraction. The voyages of the Starship Enterprise will provide a few worked examples!	David Gibson

<p>12th December (Assuming this doesn't end up as a clash with the OASI Christmas Meal!)</p>	<p>One small step for [a] man... Sadly Neil Armstrong died this year, and to remember how great his small step was, I'll be dusting off the canisters of 16mm NASA film that OASI were bequeathed a few years ago, and firing up our 70's vintage film projector, to show the official NASA film of the Apollo 11 flight. Also, I'll gather together some background material about that most modest hero.</p>	<p>Mike Whybray</p>
	<p>More to follow in the new year....</p>	

Mike Whybray Workshops organiser
 (Mobile) (Home)

Workshops venue: NACTON VILLAGE HALL IP10 0EU (next to the small village school, just below and left of the N in Nacton on the map). Please park on the same side of the road as the hall, but avoid parking on the white lines which mark clear spaces for various driveways and passing places. The police do occasionally check up on this!

Note that Mains Sewerage is coming to Nacton village, which will result in access problems for the next few months – you may need to get to the village hall and the observatory by alternative routes. More detailed information here: <http://nacton.onesuffolk.net/news/anglian-water-provides-mains-sewerage-for-nacton/>



OCCULTATIONS DURING OCTOBER

The table lists lunar occultations which occur during the month under favourable circumstances. The data relates to Orwell Park Observatory, but will be similar at nearby locations.

Date	Time (UT)	D / R	Lunar Phase	Sun Alt (d)	Star Alt (d)	Mag	Star
07 Oct	01:41:35	D	0.61-	-38	41	4.6	χ^2 Ori
	02:48:27	R		-30	50		
11 Oct	02:38:35	D	0.23-	-32	12	5.4	Ω Leo
	03:34:58	R		-25	21		
19 Oct	17:57:29	D	0.24+	-11	10	6.2	ZC 2535
20 Oct	19:00:15	D	0.35+	-21	11	7.1	Hip 91736
23 Oct	21:21:40	D	0.68+	-41	23	7.4	ZC 3154
24 Oct	23:28:36	D	0.78+	-50	19	5.8	51 Aqr
26 Oct	17:51:06	D	0.91+	-12	24	5.6	22 Psc
29 Oct	01:07:49	D	0.99+	-48	43	5.5	π Psc

James Appleton

Stars

As I gaze up at the sky each night, thousands of pairs of eyes seem to stare back at me.

A flash of light! A shooting star, that seems to leave a silvery trail behind as it darts its way through the night sky.

When you peer hard enough at them, you seem to make out a neverending maze that goes on forever.

Stars are like a glitter gel, smudged over a thick blanket of darkness.

All this in what seems to be just blue space in the air, but at night it is something completely different.

Stars.

By Emma one of the younger Kirton Guides, aged 10

ORWELL DENE: INFORMATION GAINED AND NEW QUESTIONS RAISED

In 1874, John Isaac Plummer began work at Orwell Park Observatory as Colonel George Tomline's personal astronomer. The remuneration was generous: £300 *per annum* plus accommodation at *Orwell Dene*, a tied house. *Orwell Dene* is a substantial dwelling, several times the size of a typical estate worker's cottage of the era. It is situated on Levington Road, Nacton, a walk of only ten minutes from the Observatory across the valley in front of Orwell Park Mansion.

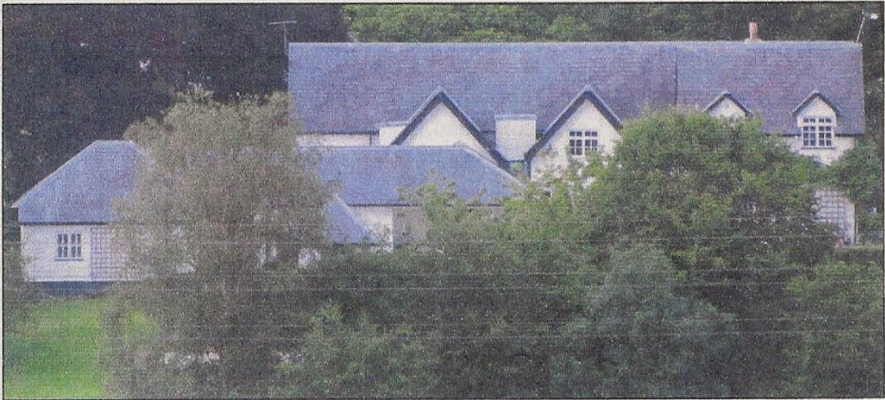
Due to the efforts of several members of OASI, much is now known about Plummer's life and work. However, *Orwell Dene* was one area about which, until recently, little was known; this was tantalising given its proximity to Orwell Park! Things changed back in February of this year when Mike Whybray revealed that he had come to know the owners through a shared hobby interest. I immediately asked him for an introduction and, after a lengthy delay due to various commitments, in July I was finally able to visit the property.

The owners were most welcoming and helpful, although a little bemused at the unexpected interest being shown in the astronomical connection of their house! Unfortunately, they did not know a great deal of the history of the property, but what they did know they gladly shared.

Nowadays, the house has the form of a spine, running north-west to south-east, parallel to Levington Road, with three sets of rooms and outbuildings off it to the south-west. The spine occupies the same footprint that it did in Plummer's era, and is to a large extent original. An impressive double-height entrance hall off Levington Road leads to a corridor running much of the length of the spine. The large wooden staircase in the hall and the floor tiles in the corridor are original features. The rooms and outbuildings off the spine, however, have been largely redeveloped. Although some of them occupy similar footprints to those of corresponding structures in Plummer's era, they have been extensively remodelled. In 1988, when the current owners purchased the property, the kitchen contained a bread oven and just outside it a well for supplying drinking water, but both features had to make way for a large kitchen extension.

When Plummer resided at *Orwell Dene*, the house provided a magnificent view of Orwell Park Mansion, but the growth of trees in modern times has curtailed this. (High voltage power lines running along the valley in front of the mansion also vitiate the view these days; fortunately they are scheduled eventually to be removed.) Nevertheless, from the foot of the garden it is still possible to gain a sense of how imposing Tomline's mansion must have appeared to Plummer each day as he stepped out of the back door of his house!

Accepted wisdom in OASI has been that Tomline had *Orwell Dene* built for Plummer. However, the current owners stated that the deeds showed that the property originated from 1760 or 1780 (there is some uncertainty). Unfortunately, the deeds were not available to consult, so this is an area for further research.



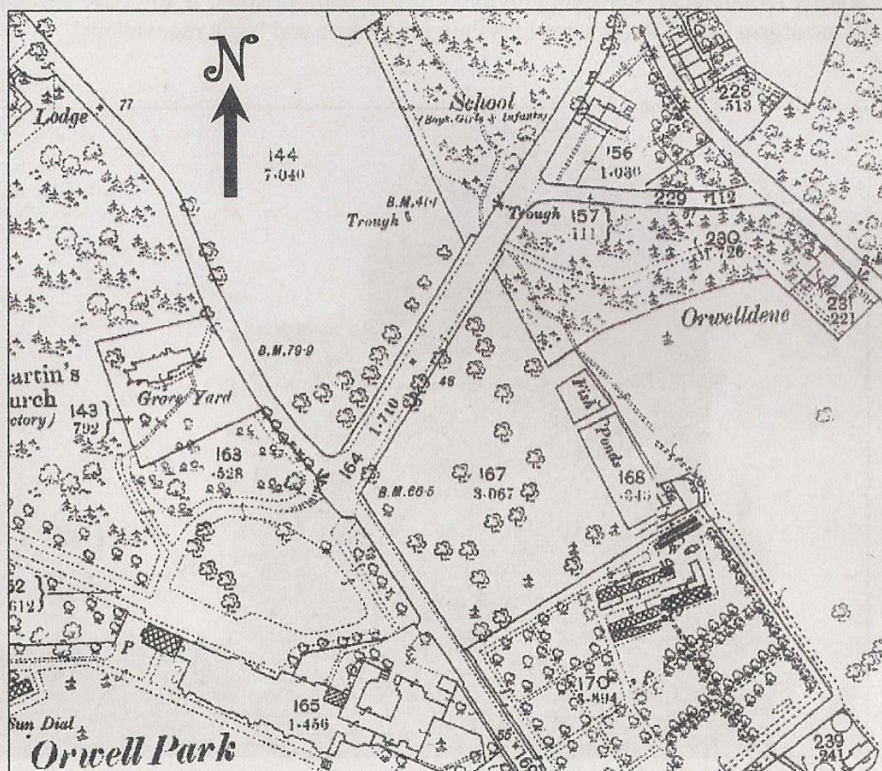
Orwell Dene from a balcony on Orwell Park Observatory. The trees and power lines running in front of them (just visible in the image) spoil the view.



Orwell Dene from its rear garden. The furthest visible roof covers the spine of the house, much as it was in Plummer's era. Closer parts of the house have been redeveloped in modern times.



Orwell Park Mansion from *Orwell Dene*. Mentally remove the trees on the right in the foreground to gain an impression of how imposing the property must have appeared in its heyday!

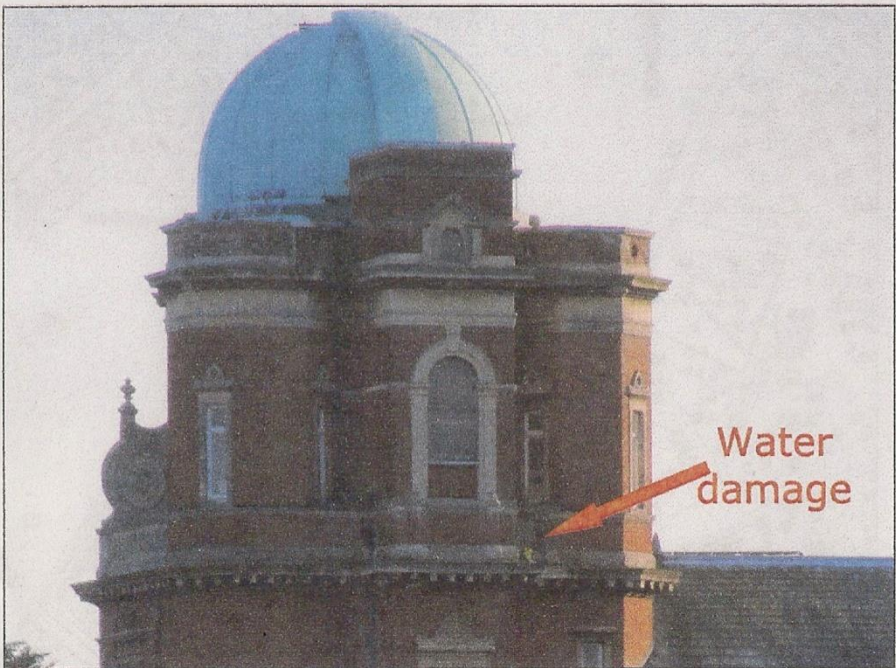


Excerpt from the 1881 OS map of the region. Tomline may have planted exotic gardens to the west of *Orwell Dene* around the path leading to School Hill.

The 1881 OS map of the region shows a path running approximately west from *Orwell Dene* to join School Hill. At the join (nowadays also the entrance to Orwell Park Gardens) there are large clumps of bamboo growing on both sides of the road. The owners of *Orwell Dene* understood that, to the immediate west of the property in Plummer's era, Tomline created a garden of interesting and exotic plants for his guests to stroll through, and that the bamboo visible nowadays is all that remains of a much more extensive planting. Clearly, another area for local history research!

Although the visit to *Orwell Dene* confirmed the generous nature of the accommodation which Tomline provided for his astronomer, it raised additional questions that should keep the historians of OASI busy for some time yet!

Finally, on a different tack, the garden of *Orwell Dene* provides an opportunity to inspect the exterior fabric of the observatory from the north-east, a view that is not otherwise easily obtained. Detailed examination of photographs of the brickwork reveals serious water damage, providing further confirmation, if any were needed, of the urgent need for measures to stabilise the fabric and begin renovations.



Close-up of Orwell Park Observatory from the north-east. Unfortunately, there is evidence of considerable water damage to the brickwork.

James Appleton

Perseids Observation at "The Dip"
Felixstowe 11th September
David Murton

Having had a nice sunny day all looked good for us being able to see the promised shower of meteors, but with increasing cloud cover during the late afternoon and evening it started to look like the 2012 jinx was back.

However, just as darkness fell the clouds started to break towards the coast and stars began to appear, so it was throw the reclining garden chair into the back of the car and off down to Felixstowe to see who else had come out to brave the brisk easterly wind!

Arriving about ten o'clock I found a hardy band well wrapped up and sheltering behind the refreshment hut with Paul Whiting trying to get his new meteor detection radio software (early warning system!) to work. I think he must have borrowed the aerial from NORAD but I hope they have more success if they need to detect any incoming missiles! Apparently all the elements, aerial/laptop/radio/software worked ok, just not together, but having missed some of the visual sightings while staring at the screen Paul decided to try again another day and just rely on his eyes!

As midnight approached, expectation was growing for the promised mass of meteors to start. Well, between the nine of us we saw a grand total of six before we called it a day at 12.15!! This may have been partly down to the restricted view of the sky due to us all being huddled up behind the hut as Mathew Leeks went to Shingle Street and saw at least 15 during the same period.

The evening was however enlivened by two appearances of the ISS which passed overhead looking unbelievably bright (Paul even saw it earlier when it was still twilight) and much satellite spotting. This was the first time that I personally had seen either, so thanks to those there for confirming what I was seeing.

So, a reasonably successful evening, at least we saw something even if it was more of a drip than a shower! and it was certainly warmer than it will be for the Geminids in December!

As a footnote I stepped out into the back garden on the Sunday night, looked up and instantly saw a very bright meteor flash across the sky and a satellite pass overhead!!

Peter D Hingley
Life and Hard Times - by Peter Hingley

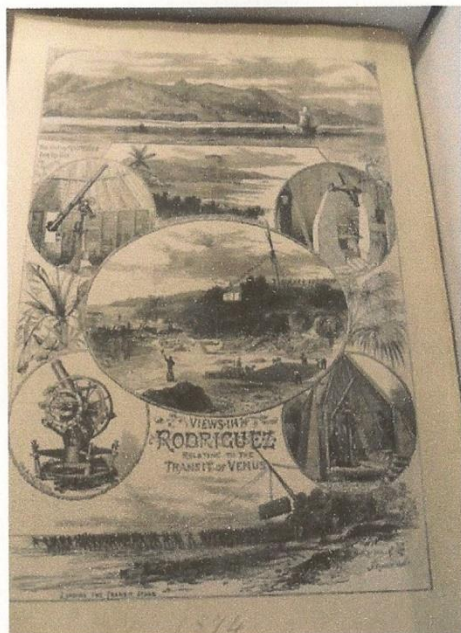
Peter D Hingley is a native of the village of Pedmore, near Stourbridge, Worcestershire, and was born in 1951. He is descended from long lines of Black Country ironworkers and Staffordshire and Shropshire yokels, a fact of which he is inordinately proud. The patronymic was originally of Huguenot origin, and the 'family' ironworks, Noah Hingley and Son, made chain cable and anchors for many great ships, most famously the tragic Titanic.

He attended the now destroyed King Edward VI Grammar School, Stourbridge, and came under heavy parental compulsion to study science rather than the literary and historical subjects for which he had some aptitude. As he was and is 'mathematically challenged' this was rather a bad idea and after various vicissitudes he managed to stagger out of Lancaster University in 1973 with a fairly poor degree in Environmental Sciences.

Having met several agreeable and civilised librarians he decided on this as a career in the belief that it would enable him to work in nice remote country places and to escape from science into subjects he was actually interested in. Achieving his usual success rate in this he first secured employment in Piccadilly, London W1, in a Learned Society Library (The Society of Antiquaries of London), specialising in history and archaeology, and six years later was fortunate enough to be 'rustled' to work as firstly Assistant Librarian and later Librarian at the Royal Astronomical Society. This job has been most rewarding and enjoyable, despite his early preferences, and he now describes himself as an aesthete on the edge of science.

He also served for 18 years in the Royal Naval Reserve, reaching the rank of Lieutenant (NCS) and receiving the Reserve Decorati.

Spare time occupations include constructing half finished models of railway equipment and ships, shovelling coal into obsolete locomotives on the Severn Valley Railway, classical music, and historical research – originally on the River Severn, later on the life of John Urpeth Rastrick, who built among much else the first steam locomotive to run in America; and on the family ironworks in the Black Country; and most recently on various aspects of astronomical history. For 13 years while living in Faversham, Kent, he was the Honorary Curator of the preserved Chart Gunpowder Mills there.

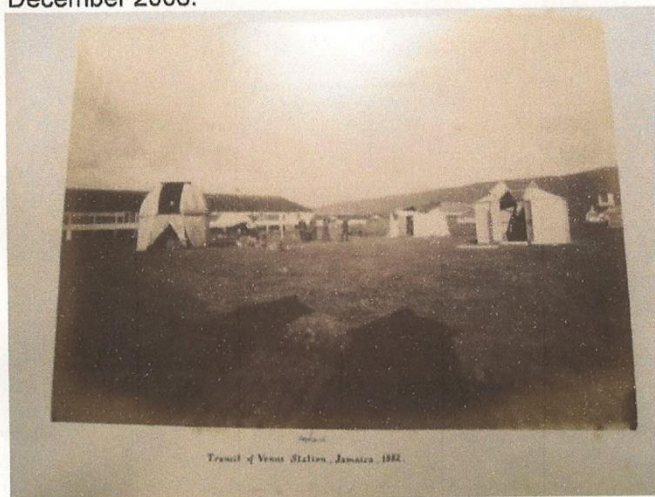


Pictures of a very topical subject: the Transit of Venus as viewed from Rodriguez Island where Plummer's assistant journeyed in 1874

Recent publications have included 'Some Droitwich Sailing Barges' (Worcestershire Archaeological Society Transactions, 2000); A Far-Off Vision; the autobiography of Edwin Dunkin, jointly edited with TC Daniel and published by the Royal Institution of Cornwall, 1999; a lengthy series of short notes in 'Astronomy and Geophysics' on various items from the RAS library and archives, referred to as BAOs (Boring Antiquarian Oddments); and in 2001 a full length article in the same journal on Warren de la Rue, HMS Himalaya and the First Photographic Eclipse'.

An article on Jules Janssen's 'Revolver Photographique', a precursor to the movie camera invented to photograph the 1874 Transit of Venus, written jointly with a French colleague, was rejected by Astronomy And Geophysics because it was too long and boring, and instead appeared in the February 2005 edition of 'Journal For The History Of Astronomy'. 'The Priest And The Stuffed Penguin: Father Stephen Perry SJ And The 19th Century Transits Of Venus' was at long last completed and was published in the JBAA in their Transit of Venus special issue, June 2005.

Other articles and research projects which may get finished one day include 'John Urpeth Rastrick, Bridgenorth Foundry, And The Building Of Chepstow Bridge, 1814- 1816'; 'The Shuckburghs Of Shuckburgh, Isaac Fletcher, And The History Of The English Mounting', 'Some Shropshire Shipbuilders', 'Some Personal And Practical Aspects Of Noah Hingley And Son'; a history of Durham University Observatory; and a major long-term project on 'Rural And Maritime Science And Technology In The Paintings Of John Constable', the lecture on which received its first airing at the Birmingham and Midland Institute in December 2006.



A Transit of Venus setting similar to that which John Isaac Plummer would have used at Bermuda in 1882

He has given numerous talks to local astronomical societies, to the Royal Photographic Society Imaging Group, at the AGM of the Scientific Instrument Society, the Open University, the Birmingham and Midland Institute, and the British Sundial Society, and lectures at the Antique Telescope Society meetings in Bath, Boston (Mass), Flagstaff (AZ,) and Armagh (North Ireland) and at the Science Centre in La Laguna, Tenerife, during the LISA meetings there; during 2004 he gave his first talk at the National Maritime Museum during the weekend conference on the transits of Venus and in August spoke on Historical Eclipse Imagery at the International Eclipse Conference at the Open University.

Peter was touched and flattered to be elected an Honorary Member of the Breckland Astronomical Society (Norfolk) to which he has given various talks. He chaired the Historical Session at the RAS National Astronomy Meeting 2005 in Birmingham and at the RAS – NAM 2006 in Leicester. He has represented the Learned Society on the Committee of the Historical Libraries forum for about 10 years and until recently carried out the mailings to members. In May 2005 he was elected as a Council member of the Society for the History of Astronomy, and in June 2006 was co-opted onto the Executive Committee of the Historical Model Railway Society. He is also a member of the British Sundial Society. In December 2005 he presented a seminar at the Physics Department, Durham University, under the title 'Durham University Observatory: A Solution In Search Of A Problem?'. He has been for some years a Consultant to Commission 41 of the International Astronomical Union and was elected as a full IAU member at the General Assembly in August 2006. He has recently been appointed by the RAS Council as a member of the RAS's Heritage Committee.

At the present time he is working on the organisation of the following conferences:

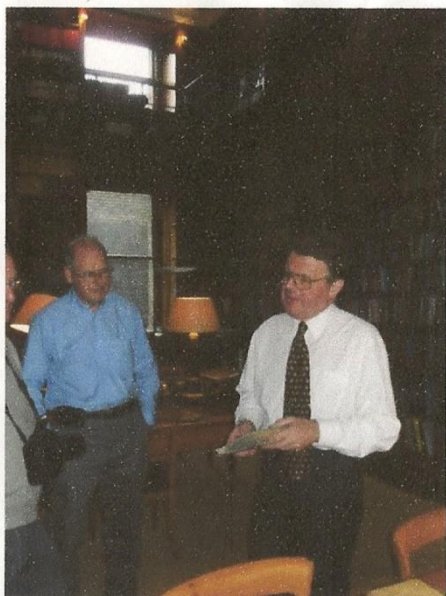
Society for the History of Astronomy: joint meeting with the Royal Meteorological Society, 2009 March 28

Society for the History of Astronomy: 'Stars And the Sky, a meeting to honour David Dewhurst, Astronomer, Scholar, Librarian', provisional date 2009 April 18.

Royal Astronomical Society, Special Discussion meeting, 2009, May 8, 'Mars before the Space Age', assistant organiser to Professor Barry Jones.

Hingley is also struggling up the learning curve with medium format photography and results from his Bronica have so far been published in 'Narrow Gauge World' and 'Astronomy And Geophysics' and in Mike Cowham's books on 'Sundials In The British Isles'.

P D Hingley



Peter in the RAS Library

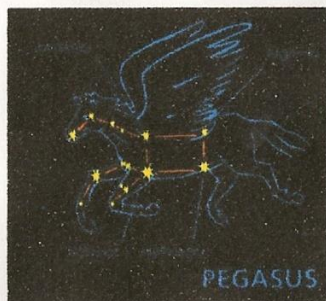
Current memberships

Severn Valley Railway (Life Member)
Bluebell Railway
West Somerset Railway
Great Western Society
Caldon and Uttoxeter Canal Trust (Life Member)
Rochdale Canal Society
Cotswold Canals Trust
Gauge 0 Guild
7 mm Narrow Gauge Associate
Historical Model Railway Society (Committee Member)
Broad Gauge Society
Heath and Hampstead Society (Life Member)
Society for the History of Astronomy (Council Member)

Orwell Astronomical Society (Ipswich)



AUTUMN
LECTURE
2012



Nick Hewitt

"Barnard, Gordon and the Darkness"*

Friday 12th October 8pm

The Methodist Halls,
Black Horse Lane, Ipswich.

* Dark Nebulae

Please note that this meeting will be held in a larger upstairs room.

This time there is a small risk that parking may be limited so you may want to arrive in time to divert to one of the many nearby car-parks, just in case.



Nice photograph of Tycho taken at near full moon on evening of
29th August 2012

Newsletter Articles

Our Society is always on the lookout for newsletter articles! If you would like to submit an article, please email it in Microsoft word format <e.g.A5 landscape 10 point font> to the editor, Eric Sims at [REDACTED] by the third Wednesday of each month to ensure it appears in the next month's newsletter. If you don't have access to a computer, please phone me at the number published inside the back page of the newsletter.

Eric Sims

OASI Committee Contacts & Responsibilities

Neil Morley	Chairman	☎		Chair committee meetings. Represent OASI to external bodies.
Roy Gooding	Secretary	☎		Respond to enquiries. Press & publicity. Out Reach Meetings Open days.
Paul Whiting FRAS	Treasurer	☎		Finance. Visits by outside groups.
James Appleton	Committee	☎		Minutes of committee meetings. Web site.
Bill Barton FRAS	Committee	☎		Safety & security.
Martin Cook	Committee	☎		Membership. Tomline Refractor maintenance.
Tina Hammond	Committee	☎		Librarian.
Peter Richards	Committee	☎		Lecture meetings. Email distribution lists.
Eric Sims	Committee	☎		Newsletter.
John Wainwright	Committee	☎		Equipment curator.
Mike Whybray	Committee	☎		Workshops.

To subscribe to the mailing list



Trustees

Mr Roy Adams
Mr David Brown
Mr David Payne

Honorary President

Dr Allan Chapman D.Phil MA FRAS

DIARY for OCTOBER

STONS Tuesday 9th & 23rd From 8:00pm	SMALL TELESCOPES OBSERVING NIGHTS AT THE OBSERVATORY Main observing targets Lyra & Cygnus ☎ Paddy O'Sullivan [REDACTED] ☎ Gerry Pilling [REDACTED]
Wednesdays From 8.00pm	OBSERVATORY CLUB NIGHTS Observing with the Tomline Refractor and other telescopes if skies are clear. ☎ Martin Cook [REDACTED] mobile [REDACTED] ☎ Roy Gooding [REDACTED] mobile [REDACTED]
Wednesday 10th October Doors open 7:45pm Start 8:00pm	OASI WORKSHOP At Nacton Village Hall Aurora run by Paul Whiting ☎ Mike Whybray [REDACTED]
Tuesday 2nd Oct 8.00pm Thursday 11th Oct 8.00pm	OBSERVATORY VISITS BY LOCAL COMMUNITY GROUPS Taster evening Michelle Waterson group ☎ Paul Whiting FRAS [REDACTED]
To be arranged at a later date	NEXT COMMITTEE MEETING Venue: The Methodist Church Hall Blackhorse Lane Ipswich

STAR PARTY / CHANTRY PARK

Saturday 22nd September 8.00pm to 10.00pm

OPEN WEEKEND

Orwell Park School Observatory.

Saturday 27th Sunday 28th October 7:30pm – 10:00pm

Society Contact Details

Observatory tel. no. (meeting nights only): [REDACTED]

Secretary: Roy Gooding [REDACTED] (day) [REDACTED] (evening)

Web-site. James Appleton: e-mail [REDACTED]

E-mail queries: info@oasi.org.uk

Facebook.com/orwell astronomical

Chairman: Neil Morley [REDACTED] / e-mail [REDACTED]

Please send material for the OASI web site (e.g. observations, notices of events, general interest articles) to info@oasi.org.uk