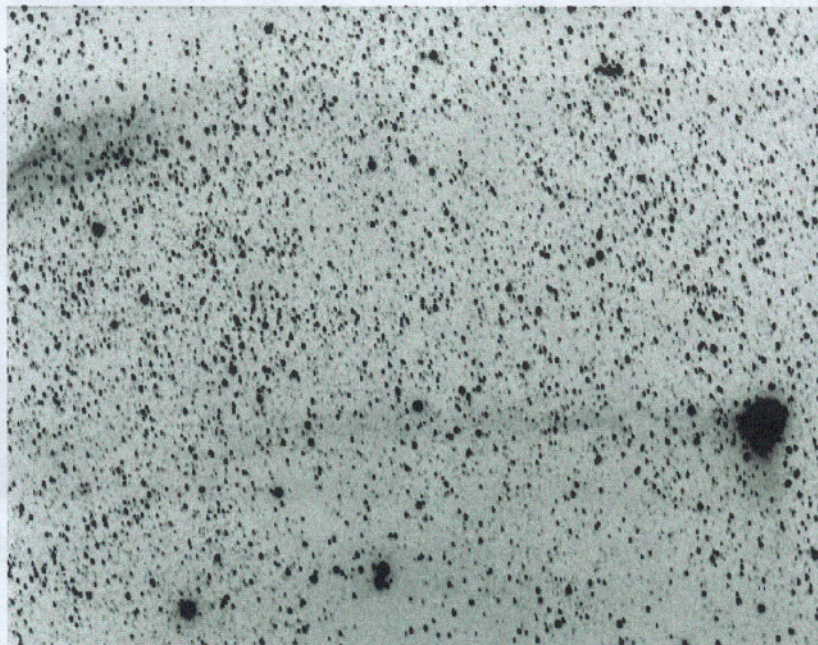




ORWELL ASTRONOMICAL SOCIETY (IPSWICH)

Registered Charity No 271313
www.oasi.org.uk

NEWSLETTER – 2005 MARCH



Comet C/2004Q2 Machholz passing near NGC 1499 - the California Nebula (top left) in Perseus.

Imaged by Mike Harlow from his Bucklesham home 2005 January 12th at 19.30UT. Mike utilised a Starlight Express CCD with 55mm lens at f4 on a 5 min exposure. The image has been contrast stretched and presented as a negative to make the Comet's approx 5 degrees faint ion tail stand out.

Further images are available on our web site

A UNIQUE OFFER FOR OASIMEMBERS

In commemoration of the Transit of Venus so successfully observed from Orwell Park last June one of our members, Peter Grimer, has commissioned the manufacture of a run of **numbered limited edition of up to but no more than 50 plates**. The plates are of a very high quality fine bone china and measure 265mm (10 ½ inches) diameter with a sky blue background depicting the transit path across the solar disk, complete with realistic limb colour, and the Orwell Park Observatory tower watermarked in a darker blue. The edge of the plate is finished in real gold depicting the points of the compass and the reverse carries the society logo.



The plates are packed in a high quality box lined with blue cotton material with an appropriate label on the lid.

These **EXCLUSIVE** plates are available at **£35.00** each (inc VAT) and any member interested in purchasing one is asked to place their name on a list I am compiling before making up our final order. No money required for now. This is a very special one-off offer and your chance to obtain a truly **UNIQUE** memento.

On behalf of the society, may I also record our gratitude to Peter for his generosity in donating the first three issued plates to the society – plate No 1 will be mounted and hung in our library.

Kenneth J Goward FRAS
Chairman

SOCIETY NEWS FROM THE SECRETARY

Roy Gooding

1 Subscription Renewal for 2005

If you not already paid for the 2005 session, please return the renewal form enclosed with January's Newsletter to, Martin Cook, together with monies. March's Newsletter will be the last one you received if you have not yet paid.

2 Next Committee Meeting Saturday 16th April 2005

The next committee meeting will be held on Saturday 16th April 19:30 at the observatory. This is an open meeting and any one who is interested is invited to attend.

3 Events for 2005

Meeting	Venue	Date
Astronomy Workshops	Bill Barton Positioning Ourselves - A Look At Trigonometry And Spherical Triangles	Wednesday 2 nd March
Visit from Loughton Astronomical Society	Meet at the Shepherd & Dog Pub for a meal See note below	Saturday 12 th March 17:30
Open Weekend	Orwell Park Observatory See note below	Saturday 19 th & Sunday 20 th March
Astronomy Workshops	Dave McCracken Planetary Atmospheres	Wednesday 6 th April
Lecture Meeting	Dr. Alan Chapman This meeting will take place at Orwell park School. More details when they are available	Friday 22 nd April
Society Excursion	A return visit to the National Space Centre in Leicester will be arranged if sufficient members are interested. See note below	Saturday 7 th May
Astronomy Workshops	Wednesday 04 May 2005 Paul Whiting Debris of The Solar System	Wednesday 4 th May
BAA Exhibition Meeting	The Cavendish Laboratory Madingley Road Cambridge	Saturday 25 th June
Society Barbecue	Still in the planning stage. Venue to be fixed	Date to be fixed
FAS Convention	Institute of Astronomy Cambridge	Saturday 1 st October Date?
Christmas Meal	Venue to be fixed	Wednesday 14 th December

3

4 Find Your Way Round the Night Sky Meetings (The Night Sky Section)



I plan to continue these meetings throughout the winter period if there is sufficient demand from 20:30, on Wednesday evenings when the Astronomy Workshops are not meeting. There will not be any formal dates when these meetings will take place, as it is so dependent on the weather, and my availability.

If on a clear Wednesday members would like to have a meeting, it can be convened straight away. The proposed observing site is on Nacton shores. This is about a 7 or 8 minute walk from the

observatory. **It is important that members bring along a good torch.** The track to Nacton shores can be muddy, so suitable footwear would be advisable. Other items that may be useful are binoculars and simple star maps such Planispheres.

5 Visit by Loughton Astronomical Society on Saturday 12th March

This will follow the usual external Society visiting arrangement. Any interested member is invited to come along to the Shepherd & Dog Restaurant at 17:30 for a meal and a chat with this group, before proceeding on to the observatory.

6 Summer Excursion Saturday 7th May

I will arrange a visit to the National Space Centre in Leicester if sufficient members are interested. Before I book a coach and obtain tickets, I need a minimum number to make this trip financially viable. This minimum number is 35.

The last excursion was run at a loss, costing the society over £200, so I need as many members as possible to make this trip a success.

If you are interested, please contact me Roy Gooding straight away

7 Society Equipment Inventory

I would like to compile an inventory of society member's astronomical equipment. If you would like to participate please supply me with a list of what observational equipment you have. This inventory list with the relevant names will remain with in the society. Though the total numbers of each class of instrument maybe added to the Society Web site.

4

8 Open Weekend 2005 Saturday 19th and Sunday 20th March

Opening times are 19:00 to 22:00

The Moon will be at first quarter in the 17th Jupiter and Saturn will be visible during the evening

As usual, help from as many members as possible is required

If you can give a hand in helping to look after our visitors please come along

Areas to be manned / womaned

Area	Approx. numbers
Car park	3/4
Reception desk	2
Balcony telescopes	3/4
Observatory	2/3
Star Party Site on the School playing field	2/3
Floating members who are able to relieve other members	Any number

9 Welcome to New Members

Mrs. Sherwood-Clarke and family.
Mr. B. Griffith.

Mr. Anthony Densham was a member for only a short time, so few members meet him. He died in early January, condolences are sent to his family.

Mr. Densham purchased a Meade 125 ETX last October. His wife has informed use that she would like to sell this telescope. If you are interested, please contact her on IP. 724742

Night Sky (March)

All times GMT

Sun

The sun will be rising approximately between 06:50 to 05:40
The sun will be setting approximately between 17:30 to 18:30

Moon

3 rd Quarter	New Moon	1 st Quarter	Full Moon
3 rd	10 th	17 th	25 th

Mercury Mercury will be at greatest eastern elongation on the 12th. The planet is low down in the evening sky this month and will be difficult to see. Inferior conjunction is on the 29th.

Venus Venus will be at inferior superior conjunction on the 31st

Mars Mars is visible in the morning sky this month. It will be rising before 04:00 by the end of the month this

Jupiter Jupiter is presently in Virgo, it will be rising at about 18:30 by the end of the month. Magnitude -2.5

Saturn Saturn remains observable most of the night. is Gemini this month, it will setting at about 03:00 by the end if the month. Magnitude -0.1

Uranus Uranus will be rising at about 04:30 at the end of the month. Magnitude 5.7

Neptune Neptune will be rising at about 04:00 at the end of the month. Magnitude 7.8

Meteor Showers

There are no prominent meteor showers visible this month

OCCULTATIONS DURING MARCH

The table lists stellar occultations which occur during the month under favourable circumstances. The data relates to Orwell Park Observatory, but will be similar at nearby locations.

D R	Date & Time (UT)		Lunar Phase	Sun Alt (°)	Star Alt (°)	Star	Mag
D	14 Mar	20:57	0.22+	-27	21	Hip 14689	7.5
D	14 Mar	21:30	0.22+	-31	16	57 Ari	4.3
R		22:16		-35	9		
D	15 Mar	19:05	0.31+	-11	48	Hip 18620	7.4
D	15 Mar	23:48	0.32+	-40	7	ZC 611	7.0
D	16 Mar	23:31	0.42+	-39	19	Hip 23349 (double)	7.4
D	17 Mar	20:38	0.50+	-24	52	Tycho 1870-1884-1	7.2
D	17 Mar	21:06	0.50+	-27	48	Hip 27613	7.5
D	17 Mar	21:19	0.50+	-29	46	Hip 27605	7.1
D	17 Mar	22:27	0.51+	-35	36	136 Tau	4.6
R		23:31		-39	27		
D	17 Mar	23:35	0.51+	-39	26	Hip 28033	7.0
D	18 Mar	01:04	0.52+	-37	14	Hip 28327	7.3
D	18 Mar	01:51	0.52+	-34	8	ZC 909	6.0
D	18 Mar	21:19	0.60+	-28	54	ZC 1035	6.7
D	19 Mar	02:22	0.62+	-31	10	ZC 1056	7.2
D	20 Mar	00:27	0.70+	-38	32	76 Gem	5.3
D	20 Mar	01:00	0.70+	-37	28	Hip 37848 (double)	7.3
D	20 Mar	19:57	0.77+	-17	61	28 Cnc	6.1
D	22 Mar	01:49	0.86+	-33	29	Hip 46304	7.5
R	25 Mar	19:06	1.00-	-8	9	15 Vir	3.9

James Appleton

Articles For Newsletter

Every month I am looking for articles for the newsletter. If you can help in any way it would be very much appreciated. What we need are any items of astronomical interest that you have had while observing, events you have attended and things you have planned for the future or even what you would like to do no matter how impossible it might seem at the moment.

Building your own telescope Building an observatory or improving on the equipment that you already have or just getting more use out of what you already have.

Meeting your hero's in the astronomical world. They can be inventors, scientists, astronauts or any one of thousands of people who have contributed to our knowledge and interest in things astronomical.

Now we are in the third Millennium if you think about it almost any thing is possible. Holidays abroad could be any where in the universe. The only thing holding you back now is your imagination.

As you can see we need more members to help keep the newsletter in articles. The more of you that make a contribution the easier it gets for the few who produce articles every month.

Now I hope to hear from a lot more of you in the future which will make the newsletter much more interesting and my job easier.

All entries need to be in A5 format which will save me having to retype any articles and stop me making any mistakes or misinterpretations of things I don't understand.

Newsletter Co-ordinator
E Sims

ORWELL ASTRONOMICAL SOCIETY (IPSWICH)
<http://www.oasi.org.uk/>

PUBLIC OPEN WEEKEND

Visit One of the Few Remaining Operational Victorian Observatories
Located at Nacton off the A1156 between Ipswich and Felixstowe

THE ORWELL PARK OBSERVATORY WILL BE OPEN TO THE PUBLIC ON

SATURDAY 19th March From 7:00pm to 10:00pm
SUNDAY 20th March From 7:00pm to 10:00pm

The weekends programme includes:

OBSERVATIONS OF THE MOON, JUPITER, SATURN and the NIGHT SKY

Observatory Tower using the 10" Tomline Refractor and other small telescopes
and in the field using naked eye and small telescopes

If you have a pair of binoculars we recommend that you bring them with you
and please come with warm clothing

An alternative programme of talks and slide shows will be arranged
if weather conditions are not suitable for observations

OASI PRESIDENTIAL LECTURE

Friday 22nd April 8pm at Orwell Park
School

Our Hon President, Professor Allan Chapman of
Wadham College, Oxford will deliver his second
Presidential Lecture to society members and guests on
the subject of

'THE GREAT LADIES OF ASTRONOMY'

Featuring Mary Sommerville, Caroline Herschel, Agnes
Mary Clark, Margaret Huggins, Richarda Airy, Alice
Grace Cook of Stowmarket and others.
Wine and Cheese buffet to follow the lecture.

Ken Goward

Entrance by Donation
Child & Senior Citizen £1
Adult £2

Honorary Secretary
Roy Gooding
168 Ashcroft Road
Ipswich
IP1 6AE

OASI COMMITTEE CONTACTS & RESPONSIBILITIES

Kenneth J Goward FRAS	Chairman	☎	Press Publicity with the Secretary. Open Weekend.
Roy Gooding	Secretary	☎	Main point of Society Contact. Press Publicity with the Chairman. Observatory Decoration. Visits by potential new members.
Garry Coleman	Treasurer	☎	Finance. Supervision of Grant Applications.
James Appleton	Committee	☎	Committee Meeting Minutes. Web site.
Martin Cook	Committee	☎	Membership. Tomline Refractor Maintenance.
Neil Morley	Committee	☎	Equipment Curator.
Ted Sampson	Committee	☎	Workshops. Tomline Refractor tutoring.
Eric Sims	Committee	☎	Newsletter
Mike Whybray	Committee	☎	Librarian.
Paul Whiting FRAS	Committee	☎	Visits by outside groups.
Bill Barton FRAS	Committee		Safety & Security
Peter Richards	Working under Committee direction but not Co-opted		Lecture Meetings.

REMINDER

The Open Weekend, aside from giving the wider public the chance to visit the Observatory and – hopefully – get a view through our telescopes, is our main fund raising event.

We can only run this event, however, if sufficient volunteers come forward to help.

Can you spare just a few hours on either Saturday 19th or Sunday 20th – or both evenings if you can manage it?

Please contact Ken Goward or Roy Gooding as above...

DIARY FOR MARCH

MONDAY	SMALL TELESCOPES OBSERVING NIGHTS 7 th Cancer & M44 (The Beehive Cluster) 21 st Hydra ☎ Paddy O'Sullivan
WEDNESDAY	OBSERVATORY CLUB NIGHTS 2 nd 9 th 16 th 23 rd 30 th ☎ Martin Cook
WEDNESDAY 2 nd Science Classroom	ASTRONOMY WORKSHOP From 7.45pm 'Positioning ourselves' A look at Trigonometry and Spherical Triangles Presented by Bill Barton FRAS ☎ Ted Sampson
THURSDAY	OBSERVATORY VISITS BY OUTSIDE GROUPS 10 th from 8pm – The Wesley Guild ☎ Paul Whiting FRAS
SATURDAY 12 th From 6pm	OBSERVATORY VISIT & SOCIAL LOUGHTON ASTRONOMICAL SOCIETY Open to all members – meet in the SHEPHERD & DOG CARVERY for a meal, thence to the Observatory for an evening's viewing. ☎ Roy Gooding (evenings)
SATURDAY 19th & SUNDAY 20th VOLUNTEER HELPERS NEEDED!!	OBSERVATORY OPEN WEEKEND Open to the public from 7pm – last admissions by 10pm. Tomline Refractor and balcony telescopes will be utilised and slide shows arranged in case of inclement weather. OASI Society stand will be manned at the base of the Observatory Tower. Volunteers needed to help on what will be our main fund raising event for the year. ☎ Ken Goward

SOCIETY PRIMARY CONTACTS

CHAIRMAN Kenneth J Goward FRAS ☎ (daytime & evenings)
SECRETARY Roy Gooding ☎ (daytime) (evenings)
E-MAIL QUERIES ipswich@ast.cam.ac.uk
Contact details for the full Committee may be found on the inside back page

Society Trustees
Roy Adams David Brown David Payne
Hon President
Professor Allan Chapman D.Phil MA FRAS

ORWELL ASTRONOMICAL SOCIETY (IPSWICH)

<http://www.oasi.org.uk/>

PUBLIC OPEN WEEKEND

Visit One of the Few Remaining Operational Victorian Observatories
Located at Nacton off the A1156 between Ipswich and Felixstowe

THE ORWELL PARK OBSERVATORY WILL BE OPEN TO THE PUBLIC ON

SATURDAY 19th March From 7:00pm to 10:00pm
SUNDAY 20th March From 7:00pm to 10:00pm

The weekends programme includes:

OBSERVATIONS OF THE MOON, JUPITER, SATURN and the NIGHT SKY

Observations will be undertaken in the

Observatory Tower using the 10" Tomline Refractor and other small telescopes
and in the field using naked eye and small telescopes

If you have a pair of binoculars we recommend that you bring them with you
and please come with warm clothing

An alternative programme of talks and slide shows will be arranged
if weather conditions are not suitable for observations

Entrance by Donation

Child & Senior Citizen £1
Adult £2

Honorary Secretary
Roy Gooding
168 Ashcroft Road
Ipswich
IP1 6AE