

ORWELL ASTRONOMICAL

SOCIETY IPSWICH

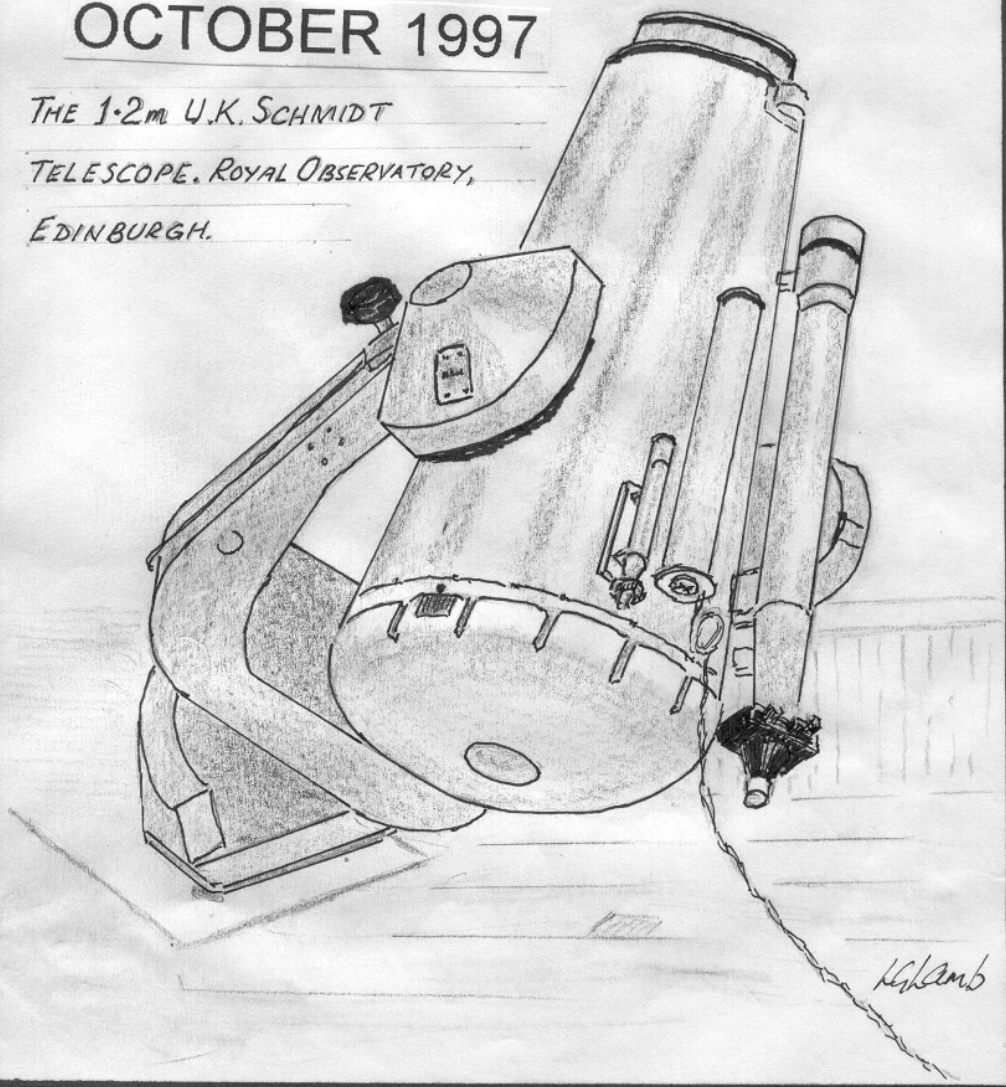
Charity No 271313

OCTOBER 1997

THE 1.2m U.K. SCHMIDT

TELESCOPE. ROYAL OBSERVATORY,

EDINBURGH.



NIGHT SKY

All times GMT

SUN

Rises approximately between 06:00 to 07:00
Sets approximately between 17:30 to 16:50

Moon

New Moon	1st
First Quarter	9th
Full Moon	16th
Third Quarter	23rd
New Moon	31st

MERCURY Mercury will be at superior conjunction on the 13th.

VENUS Venus will be well placed again this month in the western sky after sunset. Venus will be setting at about 18:30 in mid month. Mag. -4.2

MARS Mars will also be low down in the west after sunset. It will be setting at about 1.5 hours after the sun this month. Mag. 1.1

JUPITER Jupiter will be an prominent in the souther sky this month. It will be setting at about Midnight in mid month. Mag. -2.5

SATURN Saturn will be at opposition on the 10th of the month. Mag. 0.2

URANUS Uranus will be setting at about 2:.00 in mid month. Mag. 5.8

Neptune Neptune will at about 22:30 in mid month. Mag. 7.9

R. Gooding

SOCIETY NEWS

1 Committee Meeting

The next committee meeting will be held on Saturday 29th November at the observatory, from 19:30. This will be an open meeting an any member is welcome to attend.

2 Events for 1997

FAS Cambridge Convention 4th October

The venue is at the usual place, the Cavendish Laboratories. The entrance price will be about £5, payable at the door. Transport arrangements will be made on Wednesday 1st October, at the observatory.

Christmas Meal

The Swan at Westerfield has been booked for this years Christmas meal. The cost will £12.95. The meal has been booked for 20:30 on Wednesday 10th December. Any one interested in coming, please contact Roy Gooding

Committee Meeting Notes

The last committee meeting was held on Saturday 20th September. Items of general interest were:

1 It has been several years since an order for either sweatshirts or jumpers was made, with the society telescope logo on. Lynda Payne has volunteered to submit a new order if there is sufficient interest. Any one who is interest in obtaining clothing with the society telescope logo on, please contact any committee member.

2 The observatory is still out of action, while to dome ring is strengthened. It is hoped that the work will be completed by the 1st or 2nd week in October.

3 The society's early warning system is to be re-introduced. The warning system was a list of members names, phone numbers, and latest contact times. If there was any thing of special interest happening in the sky, eg aurora, the first person to see it would phoning some one on the list. The people first contacted, would in turn contact others on the list. Any one interested in being on the new list please contact Mike Harlow who will acting as coordinating.

4 A copy of Guide will be purchased for the society's PC

Entrance code

Access to the observatory is through a door fitted with a code pad which is some times activated, so any one visiting and wanting to know the code should ring the director of the night.

OCCULTATIONS DURING OCTOBER 1997

The table lists stellar occultation disappearance events which occur during the month under favourable circumstances. The data relates to Orwell Park Observatory, but will be similar at nearby locations.

Date & Time (UT)	Lunar Phase	Sun Alt (°)	Star Alt (°)	Min Dist rad	Star	Mag
09 Oct 19:45	.53+	-24	16	.96S	SAO162588	7.0
09 Oct 20:52	.53+	-33	11	.62S	SAO162637	7.3
09 Oct 21:08	.54+	-35	10	.72S	246 B. Sgr	6.9
11 Oct 19:19	.75+	-21	24	.43N	SAO164315	7.0
13 Oct 21:11	.92+	-36	32	.13S	96 Aqr	5.7

James Appleton

FAS Autumn Convention Cambridge

This is a reminder that the FAS convention at the Cavendish Laboratories Cambridge is on October 4th.

Tickets from Dave Sutton (01903) 754063 £4-50 pre book, £5-50 on the day.

09.00 Doors open.

10.00 Welcome address by Pam Spence.

10.15 "Astronomy & the Media" Dr Steve Miller.

11.15 - 11.45 coffee break.

11.45 "Stellar Radial - Velocity Measurements" Dr Roger Griffin.

12.45 - 14.15 Lunch.

14.15 "Formation of Stars & Planets" Dr Cathy Clark.

15.15 - 15.45 Tea Break.

15.45 "Neutrino Astronomy" Dr Peter Williams.

16.45 "Mars" Professor Colin Pillinger FRS.

17.45 Closing Address Pam Spence.

Society phone round

The list is used to give all interested members notification of any unexpected astronomical events, for example aurora displays or formations of noctilucant cloud.

Any one wishing to have their name added to the list of people on the society phone round list please contact Mike Harlow . Phone number on back page of journal.

OASI Trip to Herstmonceux Science Centre

David Payne

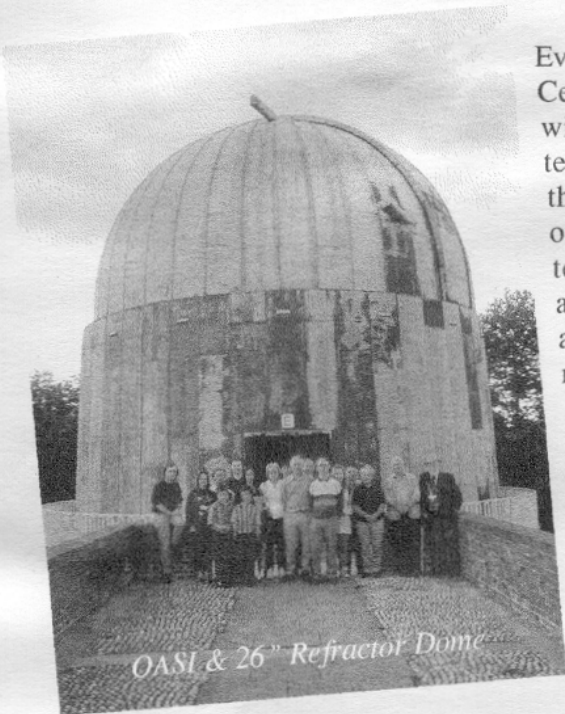
It was a beautiful sunny morning for the OASI trip to Herstmonceux Science Centre. The first pick up point was near Pete Richards home in Nacton about half a mile from the observatory. On schedule at 9:00 am seven of us boarded the brand new 24 seater coach (this was apparently its first real outing) and started for Ipswich centre to pick up a second group of members. From Ipswich the coach made its way to the A12 and onto Colchester for our final pick up. The journey went without any incidents except for an unplanned tour of Hastings, we missed the turn off for Herstmonceux at Battle!



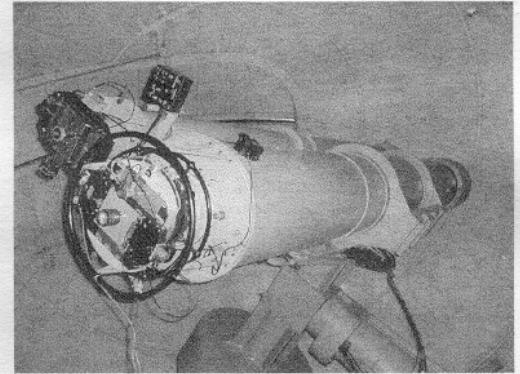
Bridge Building

Eventually we arrived at the Science Centre which is accommodated within the old Equatorial Group of telescopes belonging formally to the RGO. When the RGO pulled out of Herstmonceux Castle the telescopes were left behind, apparently it cost less just to abandon them than move them to new sites at Cambridge!

The time was now about 12:30pm and we decided to have lunch before a having a guided tour of the telescopes. After lunch, and a quick spate of bridge building!, the group met with our guide and proceeded to the 26"

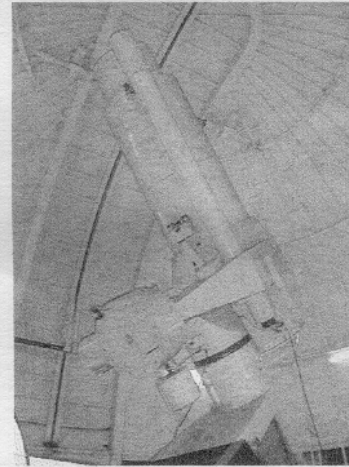


refractor dome in the south west corner of the Equatorial Group. It was here that we took the obligatory group photo. Originally this telescope was only used for photographic work for the precise measurement of stellar positions and stellar parallax. The Science Centre has now added an eyepiece focusing mount so that it can be used visually by visitors to the

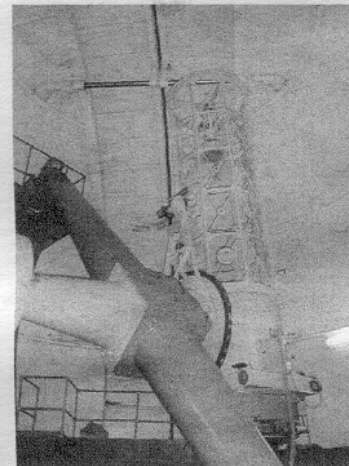


centre and local astronomical societies.

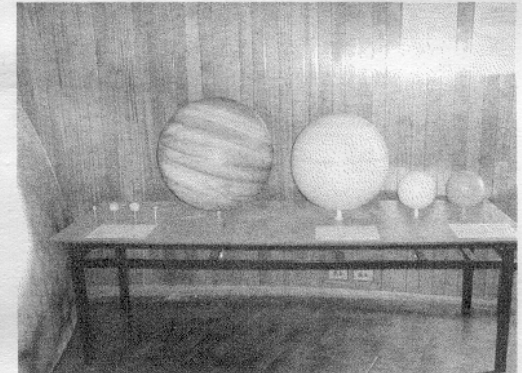
From the 26" dome we went to the south east corner dome which houses a 38" Schmitt camera. This telescope was given as a gift to the RGO but unfortunately the optical quality was very poor and it was rarely if at all used. In this dome the Science Centre has put a rather nice model showing the relative sizes of the planets and Sun, they did however miss off Saturn's rings!



38" Schmitt



36" Yapp Reflector



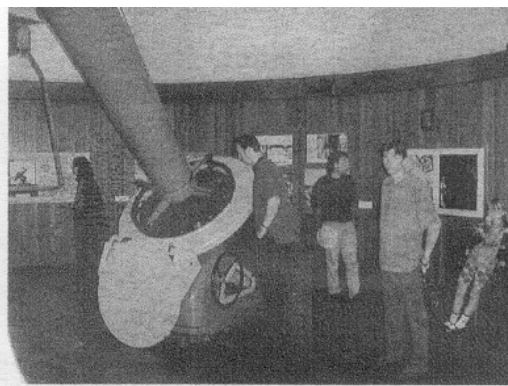
Scale Model of Planets

The final dome visited was the 36" Yapp reflecting telescope this was originally donated to the RGO by a Mr. William Johnston Yapp in 1932 and until the 98" Isaac Newton Telescope was commissioned in 1967 it was the RGO's

largest and finest instrument. The Science Centre claim they will restore the 36" to full working order but no timescales were given and I was given the impression that this was no more than an intent. It does seem an awful waste of a magnificent instrument!

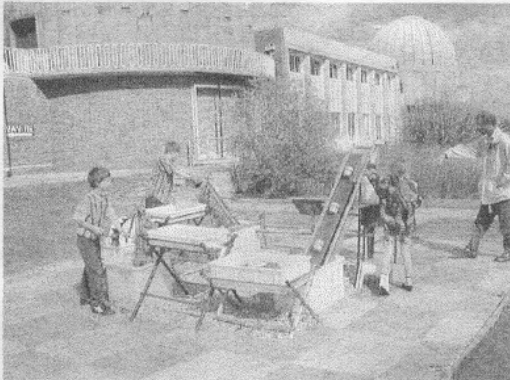
After the visit to the 36" dome the group split up to see the various exhibits within the Science Centre some also went to see the castle

which is separately owned and managed from the Science Centre and has a separate admission charge. Many of the exhibits were very interesting and kept young and old interested and amused for the remaining time. A major



OASI & Yapp Reflector Drive

theme of the Centre is "hands on" science and most of the exhibits involved interaction and participation. One of the attractions outside on the lawn within the Equatorial Group was of particular interest for our younger members. This was a series of water pumps of different designs and principles all were working and considerable manual labour was expended keeping the water circulating!



Water Pumps!

We finally left the Centre at about 5:40pm and made our way back home, on route we stopped for fish & chips to complete a very enjoyable day at the old RGO site.

Orionid meteor shower - October

The Orionid meteor shower occurs between the 16th and 27th October, peaking on the 25th. It has a flat peak, which means you won't have to watch on a specific hour to see it at its best. The meteoroids that form this shower come from Halley's comet. It's one of the least active of the major showers with a peak (ZHR) rate of 25 per hour, but the meteors are fast with trains that persist for some time so it's worth looking at. Unfortunately a waning Moon interferes with viewing in 1997.

Pete Richards

PROGRAMME FOR OCTOBER

Mondays from 7.30pm No Director for this night	GENERAL OBSERVATION SECTION
Tuesdays from 7.30pm Mr P Richards	OBSERVATORY VISITS FROM OUTSIDE GROUPS
Wednesdays from 8.00pm Mr M Cook	NEBULA & FAINT OBJECTS SECTION Mr D Payne
Thursdays from 7.30pm Mr P Richards	OBSERVATORY VISITS FROM OUTSIDE GROUPS
Fridays from 7.30pm 10th - 24th Mr J Hood	DOUBLE STARS

All members are welcome on any night, but on nights other than Wednesday please check with the director of the night that the observatory will be open.

Lectures and other events:

Committee Meeting -----On Saturday 29th November at 7.30pm in the club room at the observatory. All members are welcome to attend.

e-mail enquires to oasieng@btbcs.bt.co.uk

WWW url <http://www.ast.cam.ac.uk:80/~ipswich/>

1997 COMMITTEE

	Home Phone	Work Phone
CHAIRMAN	D Payne	
SECRETARY	R Gooding	
TREASURER	M Nicholls	
MAINTENANCE CO-ORD	M Cook	
JOURNAL CO-ORDINATOR	E Sims	
PUBLICITY & VISIT CO-ORD	P Richards	
EQUIPMENT CURATOR	M Harlow	
SPECIAL EVENTS CO-ORD		
LIBRARIAN & COMP SOFTWARE	J Appleton	
JOURNAL ARTICLES TO	E Sims	Ipswich Suffolk IP1 4HA
CORRESPONDENCE ADDRESS	R Gooding	OASI Secretary Ipswich Suffolk IP1 6AE
MEMBERSHIP	M. Cook	Ipswich IP4 5PZ